

KNOW YOUR CREEK

Kedron Brook CATCHMENT



Catchment characteristics

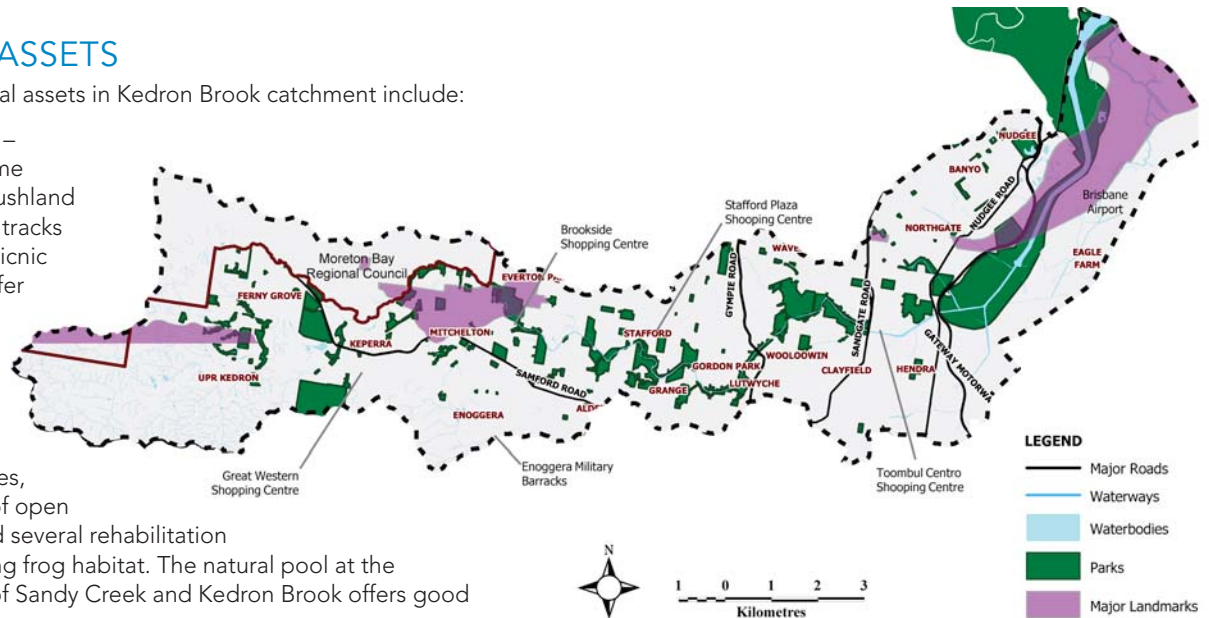
Kedron Brook catchment comprises over 110 square kilometres of land in the northern Brisbane suburbs of Ferny Grove, Mitchelton, Everton Park, Keperra, Enoggera, Stafford, Lutwyche, Kedron, Woolloowin, Clayfield, Nundah, Northgate, Toombul and Nudgee. Smaller creeks that flow into the brook along the way include Cedar Creek, Sandy Creek, and Cannery Creek.

Kedron Brook extends from D'Aguiar National Park, near Camp Mountain (within the Moreton Bay Regional Council area) 29 kilometres downstream to west of the Brisbane Airport at Nudgee, finally emptying into Moreton Bay as the Schulz Canal.

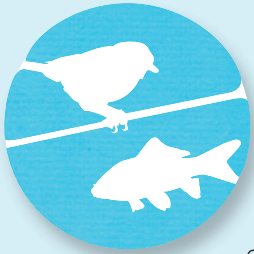
NATURAL ASSETS

Significant natural assets in Kedron Brook catchment include:

- Sparkes Hill** – Contains some significant bushland with walking tracks and hilltop picnic areas that offer lovely views.
- Grinstead Park** – Has a playground, picnic facilities, large areas of open parkland and several rehabilitation sites including frog habitat. The natural pool at the confluence of Sandy Creek and Kedron Brook offers good wildlife viewing.
- Kalinga Park** – Has an area of remnant bushland, picnic areas, barbecues, playgrounds and walking tracks.
- Nudgee Waterholes Reserve** – Has a long history of Indigenous and recreational use. It has a playground, barbecue and picnic areas, walking track, interpretive signage, lagoon viewing platform and beautiful paperbark forest.
- Boondall Wetlands** – The catchment's largest open space area is located adjacent to Moreton Bay and provides opportunities for walking, cycling and canoeing, as well as an environment centre.



AT THE LOWER END OF THE CATCHMENT BOONDALL WETLANDS IS AN INTERNATIONALLY-RECOGNISED HABITAT FOR MIGRATORY WADER BIRDS IN MORETON BAY.



Fauna

In the upper catchment in D'Aguilar National Park and the Enoggera military areas, significant mammals such as the echidna (*Echidna hystrix*) and the yellow-bellied glider (*Petaurus australis*) occur.

Scattered remnant bushland areas

throughout urbanised sections of the catchment provide habitat for birds, mammals, reptiles, amphibians and birds. Streamside habitat along Kedron Brook is important for insectivorous bats, such as the common bent-wing bat that feeds on insects emerging from the stream or adjacent vegetation.

At the lower end of the catchment, Boondall Wetlands is an internationally-recognised habitat (RAMSAR site) for migratory wader birds and other animals in Moreton Bay. Habitat near the mouth of the brook contains the only known breeding and roosting location for the grass owl (*Tyto capensis*), a species of owl that only lives in the grasslands adjacent to the brook and has been observed hunting upstream along channelised sections of the floodway. 190 species of birds have been recorded in Boondall Wetlands as well as numerous marine and terrestrial fauna including the threatened water mouse (*Xeromys myoides*). It is also a temporary home for migratory shorebirds that make their way each spring from their northern hemisphere breeding grounds to feed in the mudflats and tidal wetlands of Moreton Bay and surrounding areas. Migratory birds of significance include the eastern curlew (*Numenius madagascariensis*).



Flora

The headwaters of Kedron Brook catchment contain remnants of araucarian forest dominated by the hoop pine (*Araucaria cunninghamii*) and mixed eucalypt forests.

Remnants of dry rainforest found between Tramway Street and Samford Road, Ferny Grove form part of a bushland corridor that links remnant forest in Enoggera Reservoir through the headwaters of Kedron Brook to the bushland in the Moreton Bay Regional Council area. The creek is spotted with some of the last remaining remnants of riparian rainforest and includes remnants of the locally-uncommon flood gum (*Eucalyptus grandis*).

Along the Kedron Brook floodway, mangroves and exotic grasses are the dominant vegetation.

LAND USES

Kedron Brook catchment is mostly urbanised but significant areas of native vegetation remain, particularly in the upper catchment. As Kedron Brook passes Kalinga Park, Clayfield, it becomes a highly-structured waterway and finally, at the Gateway Motorway Deviation Bridge, the canal becomes the Kedron Brook Floodwide – a wide-walled waterway flowing to its outfall into Moreton Bay, near Nudgee Beach.

RESTORING KEDRON BROOK

The Kedron Brook Catchment Network (KBCN) encourages the involvement of the community and governments at all levels. KBCN is partnered with the Kedron Brook Catchment Branch of Wildlife Queensland.

KBCN undertakes a variety of activities including glider surveys at Ferny Grove, annual fish snap shots, frog surveys, bird observations, school education and art projects. KBCN is also involved in some large rehabilitation and revegetation projects within the catchment in partnership with Brisbane City Council, Powerlink, Queensland Rail, landholders and other groups.

Council's community conservation partnerships program helps community groups restore natural habitats in parks, remnant bushland and wetlands along waterways. There are currently a number of active bushcare groups tending rehabilitation sites along Kedron Brook from Ferny Grove to Northgate.

The program also supports the community to protect and restore Brisbane's waterways and bays in partnership with groups, businesses, schools and individual property owners.

The Boondall Wetlands Environment Centre (BWEC) provides information and displays on the wetlands and is operated by friendly staff and volunteers happy to share their love and knowledge of the wetlands. BWEC is open through the week and also on weekends.

For more information on Council's community conservation partnerships program and environment centres phone Council on (07) 3403 8888.

Websites

Brisbane City Council: www.brisbane.qld.gov.au

Kedron Brook Catchment Network:

www.kedronbrook.org.au

enquiries@kedronbrook.org.au

Brisbane Catchment Network:

www.brisbanecatchments.net.au

Healthy Waterways: www.healthywaterways.org

SEQ Catchments: www.seqcatchments.com.au

